

INSIDER TIPS

from our neighbours

Are you wondering what the locals love doing in charming Shinchi? We have gone out and asked them for their best tips:



Shinchi is a big producer of figs. One of my favorite things to do in the summer, is take a calm walk to agriya and get some delicious, fresh fig icecream.

Watanabe Mamiko
Resident of 15 years



On weekends, I love walking to the fishing port just north of town. You can rent all the gear you need, sit down in front of the ocean and relax for hours at a time. The catch is pretty good, as the water in the area is warm and comfy for fish.

Watanabe Ken
Resident of 20 years

Experience the authentic Japanese
Resilience and Hospitality this 2020

新地町 SHINCHI TOWN

A HANDY GUIDE FOR THE BEST
FOOD , ACTIVITIES & ROUTES



our tiny town in the mountains and the sea

A STORY OF 3 CITIES

Shinchi lies on the border of Fukushima and Miyagi prefectures. In the 15th century, Shinchi was in the middle of the battlefield between two rival clans, Date-han(Miyagi) and Souma-han(Fukushima).

Although part of Fukushima today, Shinchi still carries influences from Date-han in their culture and dialogue. Although Shinchi has survived and adapted through the ages of radical change, it still has kept its strong community ties and rich culture.

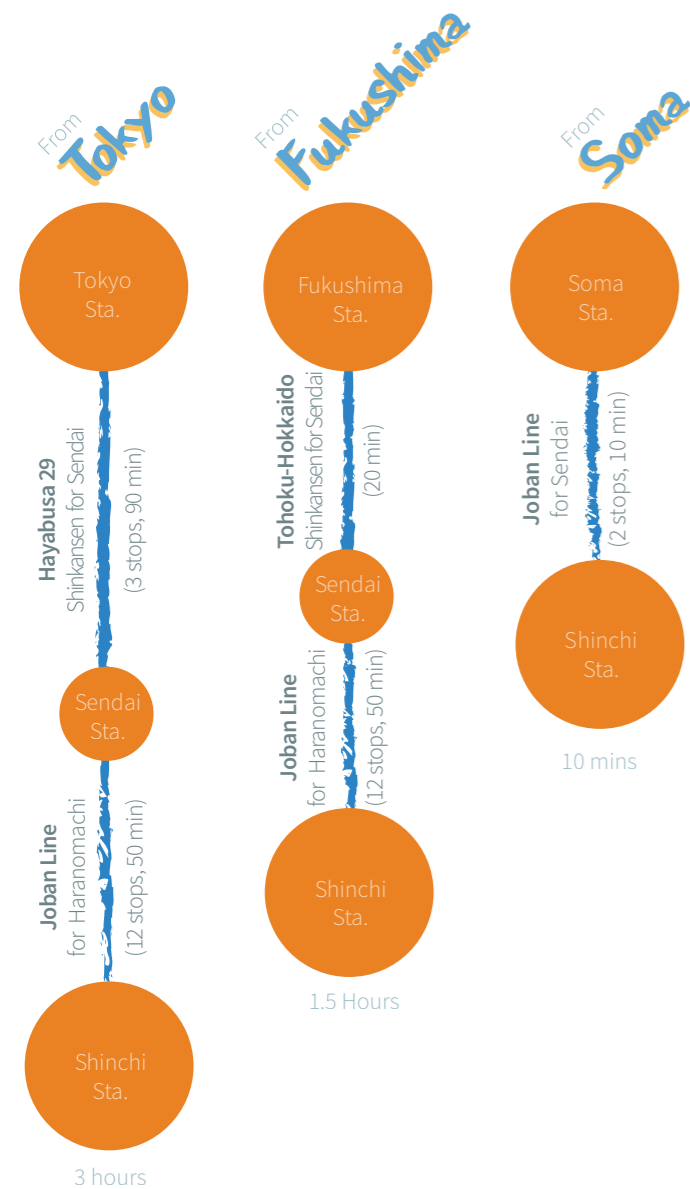
After World War II, 3 villages; Fukuda (north), Shinchi (middle), and Komagamine (south) merged into one town and became "Shinchi-machi".

Utilizing its rich natural environment and topography, Shinchi historically has developed with farming and fishery as its main industries. Currently, they have also been implementing a smart energy project to capitalize on the opportunities brought by the shared Shinchi-Soma Port and LNG power plant.

Shinchi was heavily damaged by the March 11th, 2011 earthquake and tsunami. About 1/5 of the town was destroyed and 118 people died. However, even in the direct aftermath of the earthquake, Shinchi has kept moving forward toward recovery with the support of its strong community ties and the strong spirit of its people. Now, those areas destroyed by the disaster have been converted into a memorial park and community space to honor the past and move forward into the future.

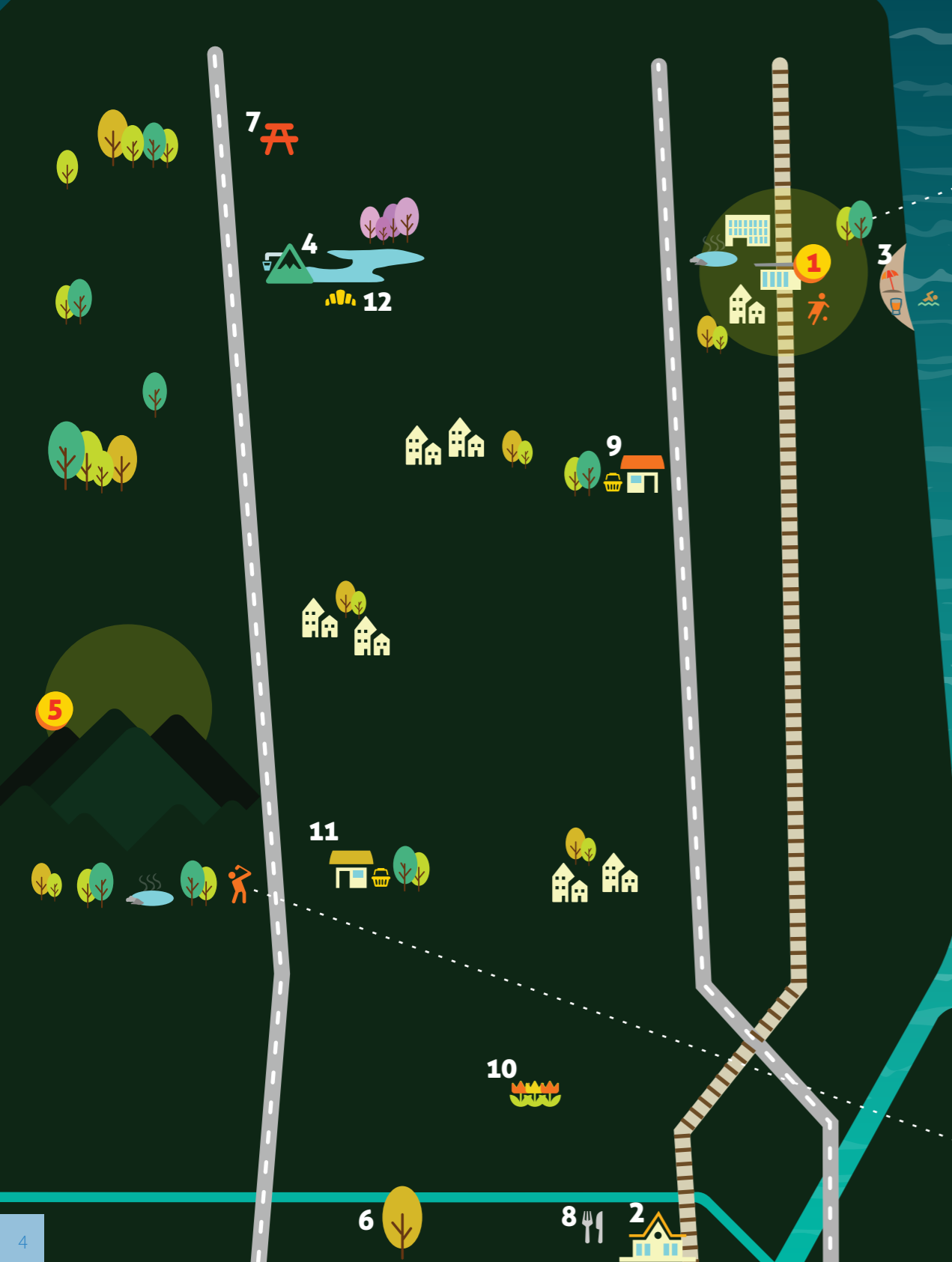
How to get here?

ACCESS ROUTES

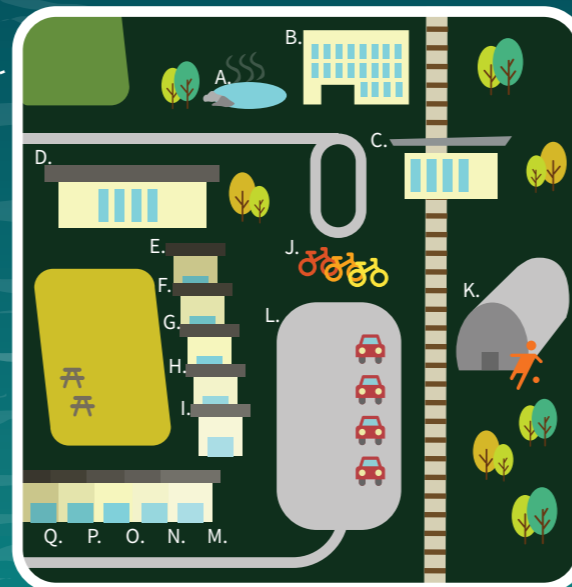


Wolf and deer statues at the foot of Mt. Karosan





1 SHINCHI STATION
Ekimae



- A. Tsurushi no Yu public bath
- B. Hotel Grado
- C. Shinchi JR Station
- D. -----
- E. Hair Salon Rochelle
- F. Chamber of commerce
- G. Le Ciel Hair Salon
- H. Yakitori restaurant
- I. Barbeque Marucho
- J. Chinese snacks Hoshien
- K. Futsal Field
- L. Car park
- M. Karaoke
- N. Bistro Amber
- O. -----
- P. -----
- Q. -----

2 KOMAGAMINE STATION

Station area with shops, restaurants, and traditional Showa era architecture

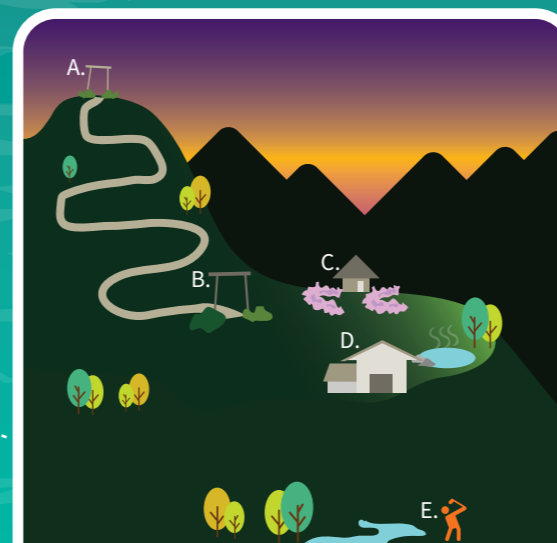
3 TSURUSHIHAMA BEACH

Protected swimmable beach with beautiful views and beach snacks available.

4 UKON SHIMIZU

Delicious natural water spring and lookout spot for Karou Mountain.

5 MT. KAROUSAN FACILITIES



- A. Mountaintop Shrine
- B. Hiking trail entrance
- C. Flower Garden
- D. Karou no Yu Hotel
- E. Golf Course

6 THE GREAT GINKGO TREE

Traditional tourist attraction site with centennial ginkgo tree and shrine

7 TORINJI TEMPLE

Traditional temple of Fukuda City.

8 GOHAN HARU

Generous, hearty portions of Japanese curry in a homy restaurant.

9 AGURI YA

Local fresh produce, vegetables, fruits and locally made dishes to go.

10 PLANT NURSERY

Botanical conservation facility and beautiful wedding venue.

11 AGRI GREEN

Local fresh produce, vegetables, fruits and locally made dishes to go.

12 BON NOIR BAKERY

Delicious confectioneries made with local ingredients.

13 TO BE DECIDED

Traditional temple of Fukuda City.

14 TO BE DECIDED

Generous, hearty portions of Japanese curry in a homy restaurant.

15 AGURI YA

Local fresh produce, vegetables, fruits and locally made dishes to go.

16 PLANT NURSERY

Botanical conservation facility and beautiful wedding venue.

17 AGRI GREEN

Local fresh produce, vegetables, fruits and locally made dishes to go.

18 TORINJI TEMPLE

Traditional temple of Fukuda City.

19 GOHAN HARU

Generous, hearty portions of Japanese curry in a homy restaurant.

20 AGURI YA

Local fresh produce, vegetables, fruits and locally made dishes to go.

21 PLANT NURSERY

Botanical conservation facility and beautiful wedding venue.

how to move around: TRANSPORTATION IN TOWN

Renting a car

Shinchi lies on the border of Fukushima and Miyagi prefectures. In the 15th century, Shinchi was in the middle of the battlefield between two rival clans, Date-han(Miyagi) and Souma-han(Fukushima).

Although part of Fukushima today, Shinchi still carries influences from Date-han in their culture and dialogue. Although Shinchi has survived and adapted through the ages of radical change, it still has kept its strong community ties and rich culture.

After World War II, 3 villages; Fukuda (north), Shinchi (middle), and Komagamine (south) merged into one town and became "Shinchi-machi".

Utilizing its rich natural environment and topography, Shinchi historically has developed with farming and fishery as its main industries. Currently, they have also been implementing a smart energy project to capitalize on the opportunities brought by the shared Shinchi-Soma Port and LNG power plant.

Shinchi was heavily damaged by the March 11th, 2011 earthquake and tsunami. About 1/5 of the town was destroyed and 118 people died. However, even in the direct aftermath of the earthquake, Shinchi has kept moving forward toward recovery with the support of its strong community ties and the strong spirit of its people. Now, those areas destroyed by the disaster have been converted into a memorial park and community space to honor the past and move forward into the future.

Renting a bike

Shinchi lies on the border of Fukushima and Miyagi prefectures. In the 15th century, Shinchi was in the middle of the battlefield between two rival clans, Date-han(Miyagi) and Souma-han(Fukushima).

Although part of Fukushima today, Shinchi still carries influences from Date-han in their culture and dialogue. Although Shinchi has survived and adapted through the ages of radical change, it still has kept its strong community ties and rich culture.

After World War II, 3 villages; Fukuda (north), Shinchi (middle), and Komagamine (south) merged into one town and became "Shinchi-machi".

Utilizing its rich natural environment and topography, Shinchi historically has developed with farming and fishery as its main industries. Currently, they have also been implementing a smart energy project to capitalize on the opportunities brought by the shared Shinchi-Soma Port and LNG power plant.

Shinchi was heavily damaged by the March 11th, 2011 earthquake and tsunami. About 1/5 of the town was destroyed and 118 people died. However, even in the direct aftermath of the earthquake, Shinchi has kept moving forward toward recovery with the support of its strong community ties and the strong spirit of its people. Now, those areas destroyed by the disaster have been converted into a memorial park and community space to honor the past and move forward into the future.

Good ol' walking

Shinchi lies on the border of Fukushima and Miyagi prefectures. In the 15th century, Shinchi was in the middle of the battlefield between two rival clans, Date-han(Miyagi) and Souma-han(Fukushima).

Although part of Fukushima today, Shinchi still carries influences from Date-han in their culture and dialogue. Although Shinchi has survived and adapted through the ages of radical change, it still has kept its strong community ties and rich culture.

After World War II, 3 villages; Fukuda (north), Shinchi (middle), and Komagamine (south) merged into one town and became "Shinchi-machi".

Utilizing its rich natural environment and topography, Shinchi historically has developed with farming and fishery as its main industries. Currently, they have also been implementing a smart energy project to capitalize on the opportunities brought by the shared Shinchi-Soma Port and LNG power plant.

Shinchi was heavily damaged by the March 11th, 2011 earthquake and tsunami. About 1/5 of the town was destroyed and 118 people died. However, even in the direct aftermath of the earthquake, Shinchi has kept moving forward toward recovery with the support of its strong community ties and the strong spirit of its people. Now, those areas destroyed by the disaster have been converted into a memorial park and community space to honor the past and move forward into the future.

exploring shinchi by mood: HOW ARE YOU FEELING TODAY?

We get it: not every day is a hiking day. Not every day is an onsen day! . Choose your preferred vibe according to your mood and energy level for the day, and enjoy one of our pre-made routes, easily accesible through your phone, available 24/7

ADVENTUROUS

Shinchi is the right place for an active, adventures day. With its beautiful Mt.Karosan hiking trail, and numerous scenic spots, ideal for biking to, you are sure to encounter stunning views, fun walks or even a refreshing swim in its beautiful, blue water beaches.

Level of energy: 

Recommended Transport: 



HUNGRY

Some days, you just need a culinary experience. Shinchi has got you covered! With numerous restaurants, types of cousine and beautiful trips to take to reach its gourmet corners, you can go for an entire day hopping from one delicious dish to the next one.


Level of energy: 

Recommended Transport: 



LAZY

For those lazy days you feel like taking it easy and enjoying the views, Shinchi is ready to spoil you and treat you right. From sunbathing with a cold beer in your hand, taking a beautiful sunset stroll with a view of the sea and the mountains, to soaking in a variety of hot baths, choose your activities of preference from our handy maps.

Level of energy: 

Recommended Transport: 



Tsurushi Hama beach, and
Sunset from Mt. Karosan